

Advertising Bulletin For Christian Scientists

Nov Jan
Dec Feb
2022/23

Bulletin

115



Dear Bulletin Friends,

We hope, as always, that you enjoy reading our little Bulletin, and responding to some of our lovely advertisers.

You will see that we have several great offers on our own products, and, if you want to see our full catalogue don't hesitate to request one, free of charge, or look on our website.

This is the last of our quarterly Bulletins as they will only come out three times a year from March 2023, but we are always happy to answer any telephone enquiries in between.

A very joyful season to you all,

from Bruce and Gina

Postage for orders from The Art Store Ltd

Orders within the UK	£5.00
----------------------	-------

Orders outside the UK	£10.00
-----------------------	--------

We will have to charge a supplement at point of posting for heavier items

Advertise in The Art Store Bulletin

Full Page (Colour advert)	£275
---------------------------	------

It is legally necessary for us to disclaim any responsibility for claims made by our advertisers.

3 Green Square, Town End, Kirkby Lonsdale, Cumbria, LA6 2BU

www.theartstoreonline.co.uk | bruce@theartstoreonline.co.uk

015242-74357

Seeing only Thy creation
We can share Thy happiness

CHRISTIAN SCIENCE HEALING IS BASED ON
A SIMPLE IDEA, POINTED OUT BY THE
MASTER HEALER, CHRIST JESUS.

WHEN YOU SEE THE PERFECT MAN, AS
GOD MADE HIM, HEALING FOLLOWS.

L I M E T R E E H O U S E

JOIN US FOR OUR
ONLINE OPEN DAY

NOVEMBER 26TH 2022

2:30 PM

WE'LL SHARE IDEAS ON HOW A CHRISTIAN SCIENCE
NURSE PRAYS TO SEE ONLY GOD'S CREATION
AND IT'S HEALING EFFECT

OUR GUEST SPEAKER, GAY BRYANT FLATT CS, WILL
BE GIVING A CHRISTIAN SCIENCE TALK TITLED
'KNOW WHO YOU ARE'

HEAR FROM OTHERS HOW THEY'VE PUT INTO
PRACTICE SEEING ONLY GOD'S CREATION -
AND WHY THEY'VE DONE IT

OPEN DAY WILL BE LIVE-STREAMED VIA OUR WEBSITE

WWW.LIMETREEHOUSE.ORG.UK

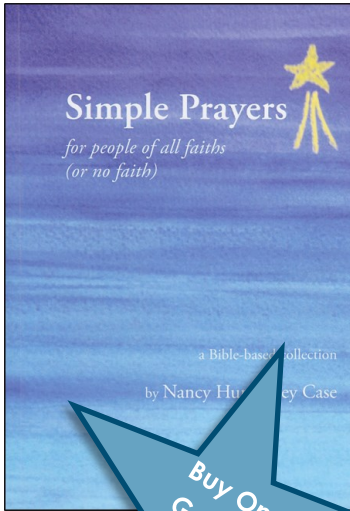
ONCE IN OUR WEBSITE, SIMPLY CLICK ON THE LINK PROVIDED.

THIS WILL NOT BE AN IN-PERSON EVENT.

WE LOOK FORWARD TO WELCOMING YOU
AND GIVING THANKS TOGETHER!

Simple Prayers

by Nancy Humphrey Case



This new 128-page pan-denominational book is full of comfort and inspiration. Written by a long-time contributor to the Christian Science periodicals, it's based on the premise that prayer is native to everyone. Seven heartfelt prayers on each of 12 topics, including: Nearness, Assurance, Tuning In, and Healing. Related Bible verses included.

Great for sharing!

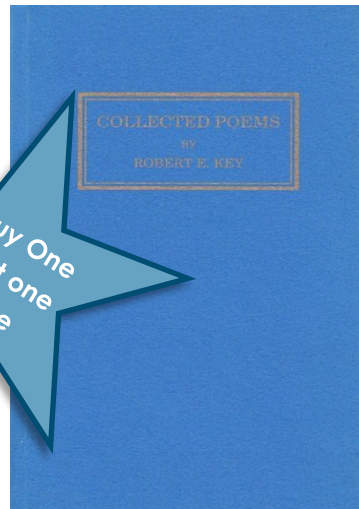
£5.95



Collected Poems

by Robert E. Key

Gentle poems, ever popular, to inspire and lift the heart. A much loved collection.



£7.95

Lime Tree House



Exciting news!

Are you interested in Christian Science nursing?

**Would you like to work in this wonderful healing and rewarding ministry,
or perhaps you want to progress with your training?**

We would love to hear from you!

**We are delighted that we are able to provide Christian Science nurses
training at Lime Tree House.**

**We are working with Le Verger, an accredited Christian Science
nursing facility and training organisation, to offer a flexible and
individualised accredited training and mentoring programme,
supporting individual needs.**

We have a wonderful team of mentors waiting to support you!

**If you are interested and want to find out more, or discuss this new
flexible training and how it could work for you, please do be in touch
with us!**

Call Lime Tree House on: 0161 973 7956

or email us at : limetreehouse@btconnect.com

Website: www.limetreehouse.org.uk

**Accredited by "The Commission for Accreditation of Christian Science Nursing Organisations/Facilities Inc."
A care home registered with the Care Quality Commission (No 38981) Registered Charity No: 219215
Registered in England & Wales No 326093, as a Company Limited by Guarantee.**

CHRISTIAN SCIENCE NURSES FUND



Supporting Christian Science nurses from trainee to retirement

THE FINANCIAL SUPPORT FUND

- **Christian Science nursing care** annually, as needed, in a Christian Science House or at home
- **Rest and Study** annually in a Christian Science House or **attendance at a conference** up to the value of £1000
- Discretionary **Christmas gifts** to retired Christian Science nurses

Means-tested grants:

- **Subscriptions** to the CS periodicals
- **Moving house** or **essential home improvement**
- **Travel costs** to and from work
- **Air fares for overseas Christian Science nurses** to return home, or to Association once every 18 months
- **Financial support** for retirees
- **Accommodation** or **living expenses**

THE TRAINING FUND

- **Tuition fees**
- **Mentoring costs** in a Christian Science facility or for mentee and mentor in the field
- **Travel costs** related to training and travelling home or to Association
- **Liability insurance fees**
- **Maintenance** support during the training period (means tested)
- **Discretionary financial assistance** for additional training on completion of primary training
- Financial assistance to support **establishing a practice as a self-employed Christian Science nurse**

Visit our website:

www.christiansciencenursefund.org.uk

Contact our administrator:

Clare Talbot, Administrator PTCNS,
PO Box 1664, Northampton NN2 1JH
Email: administrator@ptcsn.org.uk
Tel: 01604 870977

Pension Trust for Christian Science Nurses
Registered Charity 20922, Registered in England and Wales No 598995

Bow Housing Society



We offer accommodation to Christian Scientists of all ages at reasonable rents. We are just south of the river Thames at Wandsworth Common, London. It is a beautiful location, close to many amenities, shops, library and of course "between the Commons". As a resident of central London you may receive a free travel pass for all modes of public transport; trains, the underground, buses, trams etc. T&C's apply. Furthermore, Wandsworth Council residents enjoy one of the lowest council tax charges in the country.



Bow House

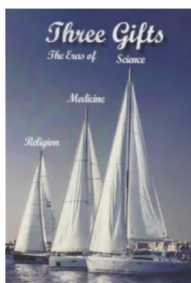
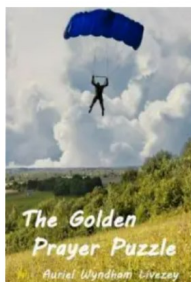
23-24 Bolingbroke Grove

London SW11 6EN

bow@housing.myzen.co.uk

Ray Cole - 020 7228 2421

All of Auriel Wyndham Livezey's fascinating books are on sale



Quiet Answers

The Golden Prayer Puzzle

The Golden Prayer Search

The Golden Prayer Time Capsule

Three Gifts

Where Will We Go From Here



They make great gifts too!

OF INTEREST TO READING ROOMS AND INDIVIDUAL CUSTOMERS



BEST-SELLERS

Kenex 1-32 (Regular)	£11.95
Kenex 1- 10 (Regular)	£4.95
Kenex 5 coloured clips	£3.95



We would love for you to join us.
Come and be cared for in a warm and
nurturing community at Charton Manor

We provide:

- Christian Science nursing care
- Rest & Study
- Assisted Living

A warm welcome awaits

For more information, please call **01322 863116** or email
mail@chartonmanor.org

Visiting Christian Science Nurse needed:

An exciting opportunity to take over a very active VCSN service. Please
apply to the Administrator for details.

**Hawthorne Trust Limited, Charton Manor, Gorse Hill,
Farningham, Kent DA4 0JT.**

A Christian Science House registered with the Care Quality Commission,
No. 1-101643210. Registered Charity, No. 209230.



The Morval Foundation

*Incorporating The New Chickering Fund,
The Ruston Bequest and The New Beechfield Fund*

The trustees of the charity are happy to consider assistance for dedicated Christian Scientists in the UK who are experiencing ongoing or one-off financial difficulties, or who need support with their living expenses.

Each application is considered on its own merits, and applicants should apply for any state benefits to which they are entitled before contacting The Morval Foundation.

Application forms are available from:

Tricia Cullimore - Administrator
The Morval Foundation
Meadow Brook
Send Marsh Road
Ripley, Surrey GU23 6JR

Telephone: 01483 223251
Email: morvalgroupp@gmail.com

Donations may also be sent to this address

Registered Charity No. 207692



McNeil Trust

Edinburgh, Scotland



A quiet haven for students of Christian Science NOW OPEN FOR BOOKINGS

The team at McNeil Trust is delighted to present its new accommodation, shown on the middle floor of the photograph to the right.

This exceptional yet affordable two-bedroom apartment - ideally suited for prayerful rest and study - offers a spacious, modern interior with beautiful south-facing views, in a convenient central location.

We are now taking bookings from students of Christian Science - for short stays, on a self-catering basis - and look forward to welcoming you.



contact@mcneilhouse.org • www.mcneilhouse.org • +44 (0)131-337 2202

THE AUXILIARY COMMITTEE FOR RETIREMENT HOMES SERVING CHRISTIAN SCIENTISTS

We welcome donations for this charity that financially supports the building and maintenance needs of UK retirement accommodations for Christian Scientists.

*Our **Housing Adviser** for accommodation/funding provides information on:*

CS retirement accommodation in the UK.

And, can suggest helpful ideas for senior citizens who may be in financial need, or in need of practical help in their own home.

**Contact: Sally Lessiter on 01865 875529
sal@sallylessiter.co.uk (new e-mail)**

We provide leaflets on 'Retirement Accommodation Information', and 'Funds and Contacts'.

**Visit our website www.carecsuk.org
for information and ideas.**

Please send donations and enquiries to:

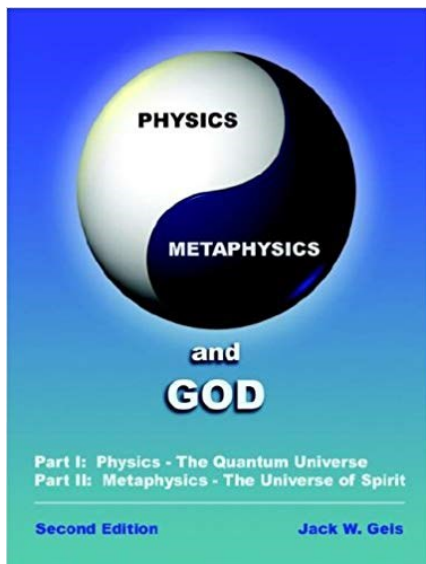
Valerie Needham – Secretary/treasurer
15 Lower Polsham Road
Paignton. Devon TQ3 2AU

01803 553344 valerie@valerieneedham.plus.com

Registered charity 271782

Physics Metaphysics and GOD

by Jack W. Geis



£19.95

Free P&P

Throughout Part 1 of the book the author quotes from notables such as Eugene Wigner, John Wheeler, Deepak Chopra, Larry Dossey, Fred Wolf, Amit Goswami and Edward R. Close on the subject of basic quantum physics and philosophy. In varying degrees each believes that observation of quantum phenomena and resultant interpretations involve consciousness. That is, consciousness plays a significant, if not primary role in interpreting or even shaping reality, God.

Each ascribes to consciousness a mental nature, but not necessarily a wholly spiritual nature independent of matter, space-time. Here is where the author and the above-mentioned begin to "part company." The author believes that beyond the quantum and quantum phenomena lies the realm of Spirit

In Part II the author discusses the phenomena of spiritual healing, or healing by prayer. No other book on the market brings in the works of Christ Jesus in a book that discusses both physics and metaphysics in the way the author does. The author presents documented healings occurring in the present age through prayer to substantiate his claim for the presence of God (Mind) and the spiritual nature of man and the universe.



Whitehaven Trust

Providing

Visiting Christian Science Nursing Services

We can now cover visits across England from
Northumberland to The Needles

(Live in Wales, Scotland or Northern Ireland? Contact us for advice)

Please call (Freephone): 0800 0304 157

Whitehaven Trust Ltd, Company no. 398716, registered Charity 216064.
The Visiting Christian Science Nursing Service is registered with the Care Quality Commission.

Cooper Pattinson's Trust Homes



Self contained, unfurnished flats and bungalows available to rent in the Windermere area. **There are current vacancies.**

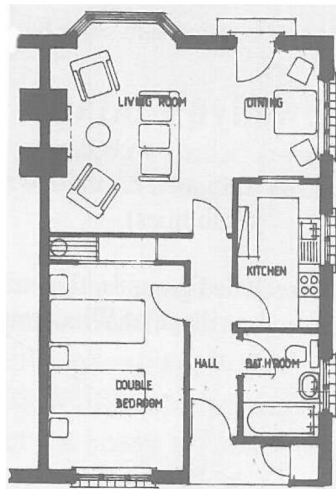
There is a Warden service, guest suite and laundry room. The properties are in a landscaped woodland setting, two minutes walk from Church and five minutes from the village. Windermere is a vibrant community with a huge range of opportunities for an active life.



Detached and semi-detached houses available from time to time.

This is a unique living opportunity.

Bungalow floor plan:



For further information please contact:-

Mrs D.R. Matthews, Cooper Pattinson's Trust Homes
c/o Rayrigg Estates Limited
Rayrigg Road, Windermere
LA23 1BW

Telephone
015394 47243
OR
015394 42281